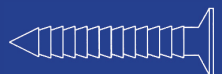
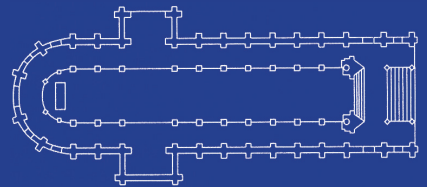
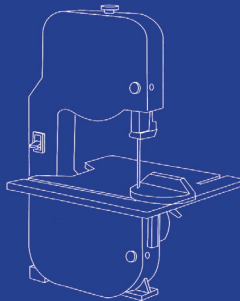
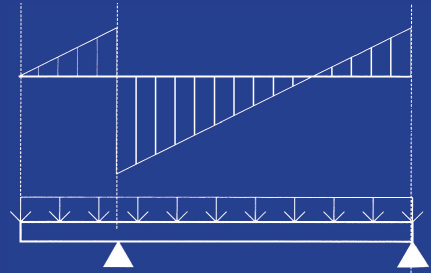
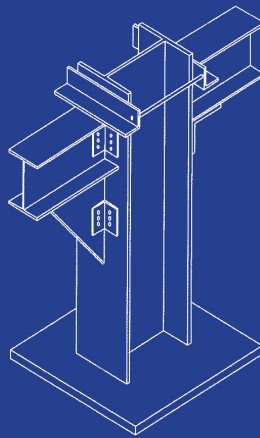
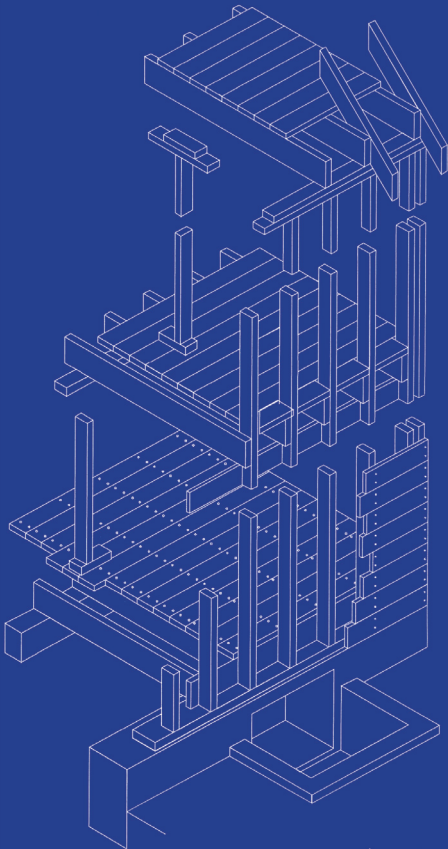
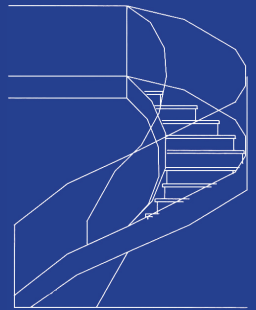


فرهنگ تصویری معماری و ساختمان

انگلیسی - فارسی

ترجمه:

هنگامه احمدی نژاد - بهاره اشرف حصار



به نام
خداوند
جان و خرد



فرهنگ تصویری معماری و ساختمان

انگلیسی - فارسی
مرجع زبان فنی

ترجمه هنگامه احمدی نژاد
(عضو هیئت علمی دانشگاه آزاد اسلامی مشهد - واحد سما)
و بهاره اشرف حساری

فرهنگ تصویری معماری و ساختمان انگلیسی - فارسی / نویسنده کارلز بروتو ... [و دیگران]؛ ترجمه هنگامه احمدی نژاد، بهاره اشرف حصراری.
مشهد: آهنگ قلم، ۱۳۹۱.
۲۲۸ ص: مصور، جدول، نمودار.
شابک: ۹۷۸-۶۰۰-۲۲۵-۰۵۸-۲

فهرست نویسی بر اساس اطلاعات فیبا
یادداشت: عنوان اصلی: Visual dictionary of architecture & construction, 2007.
یادداشت: [نویسنده کارلز بروتو، مونیکا کالماهو، پیلا چکو، دیمیتریس کوتاس].
موضوع: معماری -- اصطلاحها و تعبیرها
موضوع: ساختمان سازی -- اصطلاحها و تعبیرها
شناسه افزوده: احمدی نژاد، هنگامه، ۱۳۵۹ -، مترجم
شناسه افزوده: اشرف حصراری، بهاره، ۱۳۵۹ -، مترجم
رده بندی کنگره: NA۳۱/ف۳۷ ۱۳۹۱
رده بندی دیویی: ۷۲۰/۳
شماره کتابشناسی ملی: ۲۷۸۵۲۹۷

فرهنگ تصویری معماری و ساختمان

هنگامه احمدی نژاد (عضو هیئت علمی دانشگاه آزاد اسلامی مشهد - واحد سما)
و بهاره اشرف حصراری
غزاله عرفانی با همکاری منا گندمکار
مؤسسه چاپ آستان قدس رضوی
بهار ۱۳۹۱
۱۵۰۰
۲ - ۵۸ - ۰۵۸ - ۲۲۵ - ۶۰۰ - ۹۷۸

مترجم

صفحه آرایی و آماده سازی چاپ
لیتو گرافی، چاپ و صحافی
چاپ اول
شمارگان
شابک



آهنگ قلم

مشهد / کدپستی ۹۱۳۵۹۶۳۷۱۹
۰۵۱۱ ۷۶۴۶۳۰۹ - ۰۹۱۵۴۲۹۱۹۰۶
info@ahanghghalam.ir
www.ahanghghalam.ir

انتشارات

نشانی ناشر

تلفن

پست الکترونیکی

سایت

به استناد قوانین جهانی و ملی مالکیت
فکری تمامی حقوق این اثر محفوظ است.

فهرست

سازه / structure

مکانیک	۹	Mechanics
تحلیل سازه	۱۷	Structural analysis
سازه	۲۰	structure
سازه با عملکرد حجمی	۲۲	Bulk- active structure
سیستم قابی	۲۹	Fram system
سازه با عملکرد برداری	۳۶	Vector- active structure
سازه با عملکرد سطحی	۴۲	Surface- active structure Facade
سازه با عملکرد فرمی	۴۷	Form- active structure
سازه لوله ای	۵۲	Tubular structure
فوندانسیون	۵۴	Foundation
تجهیز کارگاه	۶۴	Sitework

ساختمان / building

ساختمان	۷۱	Building
بام	۷۸	Roof
پلکان	۹۳	Stair
آسانسور	۱۰۱	Elevator
درب	۱۰۳	Door
پنجره	۱۱۰	Window
تیرچه جداکننده غیرباربر	۱۱۶	Nonbearing partition
نما	۱۱۹	Facade
کفسازی نهایی	۱۳۲	Finish floor
سقف	۱۴۰	Ceiling
عایق حرارتی	۱۴۳	Thermal insulation
عایق کاری رطوبتی	۱۴۴	Damp proofing
صوت	۱۴۶	Sound
گونه شناسی ساختمان	۱۴۹	Building typology

اجرا / construction

چوب	۱۵۹	Wood
فلز	۱۷۰	Metal
بتون	۱۷۵	Concrete
آجر	۱۸۲	Brick
بلوک بتونی	۱۸۵	Block
میخ	۱۸۹	Nail
پیچ	۱۹۱	Screw
بالت	۱۹۳	Bolt
ابزار	۱۹۷	Tool

تأسیسات / Installations

(تهویه مطبوع)	۲۰۳	HVAC
انرژی خورشیدی	۲۱۳	solar energy
برق کاری	۲۱۶	Electricity
نورپردازی	۲۲۱	light
لوله کشی	۲۲۹	plumbing
ایمنی حریق	۲۴۱	Fire safety

هندسه / Geometry

هندسه اقلیدسی	۲۴۷	Euclidean geometry
رسم یا نقشه کشی	۲۲۵	Drawing
نقشه برداری توپوگرافی	۲۶۱	Topographic Survey

فهرست الفبایی	۲۸۷	Alphabetical Index
---------------	-----	--------------------

alphabetical index

- volt, 216
- voltage, 216
- volt-ampere, 217
- waferboard, 165
- walking line, 93
- wall, 46
- wall, 73
- wall cladding with angular corrugated sheeting, 131
- wall cladding with assembled elements, 131
- wall furnace, 205
- wall string, 95
- wall washer, 227
- wallboard, 116
- wall-hung plumbing fixture, 240
- wane, 160
- warp, 161
- Warren truss, 38
- wash basin, 231
- wash-down closet, 234
- washer, 196
- waste pipe, 236
- water heater, 207
- water main, 230
- water meter (U, S, A), 230
- water proofing, 69
- water softener, 231
- water supply, 230
- water system, 231
- water tower, 229
- water treatment, 231
- waterstop, 179
- watt, 218
- wattage, 218
- watt-hour meter, 9 21
- watt-hour meter (U, S, A), 218
- wavelength, 146
- wear course, 88
- weathered joint, 124
- weathering steel, 171
- weathertight PVC tape, 85
- web, 28
- web reinforcement, 180
- wedge, 169
- weight, 11
- well, 229
- wet mix, 176
- wet standpipe, 231
- wet vent, 237
- wet-pipe system, 243
- whaleback roof, 79
- white cement, 175
- white noise, 148
- white portland cement, 135
- white portland cement, 176
- whole-house ventilator, 212
- wide flange, 172
- wide flange, 172
- wigwam, 153
- wind load, 18
- winder, 96
- window, 69
- window, 73
- window, 110
- window frame, 110
- wing balcony, 154
- wing nut, 196
- winter, 213
- wire brush, 59
- wire nail, 190
- Wood, 157
- wood, 159
- wood flooring, 136
- woodbrick, 116
- woodwork, 166
- work plane, 228
- woven carpet, 139
- wreath piece, 99
- X-axis, 254
- X-coordinate, 254
- yard lumber, 163
- Y-axis, 254
- Y-coordinate, 254
- yield point, 16
- Y-pipe, 233
- yurt, 153
- Z-axis, 254
- Z-coordinate, 254
- Zee, 172
- zero-force member, 38
- zinc, 170

- topographic survey, 261
 torsion, 13
 torus, 252
 transfer column, 22
 transfer girder, 25
 transformer, 217
 transit, 263
 translation, 11
 translational equilibrium, 11
 translational surface, 252
 transmission loss, 146
 transverse force, 12
 transverse load, 12
 trap, 240
 tread, 93
 trellis, 77
 tremie concrete, 63
 triangle, 247
 triangulation, 261
 trilateration, 261
 trimetric projection, 258
 trimmer arch, 204
 trimmer joist, 25
 triplex, 151
 Trombe wall, 213
 trowel, 198
 troweled joint (USA), 124
 truck mixer, 177
 trullo, 153
 truncated, 25
 truss bar, 180
 truss head, 193
 truss rod, 37
 truss to sprandrel anchor, 35
 trussed beam, 27
 trussed joist, 27
 trussed rafter, 37
 trussed tube, 53
 tube structure, 53
 tube structure inside another, 53
 tufted carpet, 138
 tungsten, 223
 turning point, 261
 tusk, 168
 twist, 13
 twist, 161
 two-hinged arch, 49
 two-pipe system, 208
 two-pipe system, 211
 two-point perspective, 257
 two-way slab, 42
 two-way structure, 21
 Types of doors, 104
 typology, 149
 U-bolt, 194
 ultimate strength, 16
 uncased pile, 60
 underbed, 135
 undercut tenon, 168
 underlayment, 84
 underlayment, 132
 undressed lumber, 162
 unequal leg angle, 172
 uniform grading, 175
 uniformly distributed load, 15
 uninterruptible power supply, 218
 unit lock, 107
 unit stress, 16
 unit substation, 219
 unit system, 128
 unit-and-mullion system, 128
 unrestrained member, 20
 unstable structure, 21
 valance lighting, 226
 valley, 78
 valley flashing, 84
 valley jack, 80
 valley rafter, 80
 vanishing point, 257
 vapor retarder (USA), 144
 variable-air-volume system, 211
 vault, 44
 vaulted gravity wall with buttresses, 58
 vector, 9
 vector-active structure, 36
 veneer, 130
 veneered wall, 46
 Venetian blind, 215
 Venetian door, 105
 Venetian terrazzo, 135
 vent, 207
 vent stack, 237
 vent system, 237
 ventilate, to, 212
 ventilation, 212
 verandah, 75
 vermiculite, 175
 vertex, 247
 vertical location, 255
 vertical reinforcement, 180
 vertical shearing stress, 14
 vertical siding, 127
 vibration isolator, 148
 vibrator, 177
 Vierendeel girder, 39
 vinyl tile, 132
 vitrified brick, 184
 V-joint, 124

alphabetical index

- structural member, 20
- structural pattern, 21
- structural steel, 171
- Structural steel members, 172
- structural tee, 172
- structure, 20
- structure, 73
- structure-borne sound transmission, 148
- stub tenon, 168
- stud, 116
- stud partition, 116
- studio apartment, 150
- subdiagonal, 36
- subfloor, 132
- subgrade, 132
- substation, 217
- substructure, 73
- subsurface sand filter, 239
- sulfate resisting portland cement, 176
- summer, 213
- summerwood, 159
- sump, 89
- sun control, 215
- sunken foot raft foundation, 57
- sunken rib raft foundation, 57
- sunshade, 215
- superstructure, 73
- supply pipe, 211
- support condition, 20
- surbased arch, 49
- surface, 247
- surface condensation, 144
- surface-active structure, 42
- suspended ceiling, 142
- suspension structure, 50
- sweating, 144
- sweep fitting, 232
- swinging door, 104
- switch, 216
- switch, 220
- switchgear room, 218
- switchgear room, 218
- switchgear room, 219
- symmetry, 253
- sympathetic vibration, 147
- synagogue, 150
- tack, 190
- tailpiece, 25
- tangential shrinkage, 161
- tap, 235
- tapered column, 22
- tapping screw, 191
- tarraco type block, 188
- task lighting, 226
- T-beam, 27
- teaser, 155
- Tee, 232
- temperature, 203
- tempered hardboard, 165
- tempered steel point with four pyramidal flanges, 59
- temple, 150
- tendon, 181
- tenon, 168
- tensile stress, 15
- tension, 13
- tension member, 13
- tension member, 59
- tension reinforcement, 180
- tension-control bolt, 195
- tent structure, 51
- tepee, 153
- terminal reheat system, 211
- terrace, 75
- terrazzo, 135
- terreplein, 66
- tertiary beam, 25
- tertiary member, 20
- tetrahedron, 250
- texture 11 - 1 siding, 130
- texture perspective, 255
- thatch, 143
- theater (USA), 154
- theodolite, 262
- thermal barrier, 143
- thermal conductivity, 203
- thermal emissivity, 203
- thermal insulation, 69
- thermal insulation, 143
- thermocouple, 206
- thermostat, 206
- thermostat, 0 21
- thick-set process, 134
- thin-bed process, 134
- T-hinge, 108
- thin-set terrazzo, 135
- thread, 191
- throat, 205
- through stone, 120
- tie, 46
- tie bar joint, 35
- tilting fillet, 83
- timber framed house, 152
- timber pile, 59
- toilet bowl, 231
- Tool, 157
- tool, 197
- top rail, 103
- Topographic Survey, 245

- spading, 177
- spandrel beam, 25
- spandrel glass, 128
- spatial edge, 255
- speed of sound, 146
- sphere, 251
- spherical surface, 252
- spheroid, 251
- spindle, 106
- spiral column, 24
- spiral reinforcement, 180
- spiral stair, 99
- spiral stair, 99
- spirit level, 263
- splash block, 89
- splash board, 85
- splice plate, 35
- split, 160
- split type block, 188
- split-face block, 186
- split-level house, 152
- split-ring, 195
- spotlight, 227
- spreader, 178
- spring, 48
- spring hinge, 109
- spring steel, 171
- springer, 48
- springwood, 159
- sprinkler head, 243
- sprinkler system, 243
- square, 248
- square head, 192
- square splice, 169
- squared rubble, 121
- S-shape, 172
- stability, 11
- stack, 236
- stack bond, 122
- stack vent, 237
- stadia, 262
- stage, 154
- stagehouse, 155
- staggered-stud partition, 116
- stainless steel, 170
- stainless steel, 171
- stair, 69
- stair, 93
- stair rail, 93
- staircase, 93
- stairhead, 93
- stairs for apartment buildings or private homes, 97
- stairs for schools or public buildings, 97
- stairs in a theater or congress hall, 97
- stairs to a cellar or attic, 97
- stairwell, 93
- stake, 200
- standard terrazzo, 135
- standby generator, 218
- standing seam joint, 173
- standpipe, 243
- starter tile, 83
- starting course, 84
- static load, 17
- station, 261
- steam heating, 207
- steel, 171
- steel beam, 28
- steel column, 24
- steep attic or rookery stairs, 97
- steep stairs in a private home, 97
- step, 93
- step ladder, 97
- step-down transformer, 217
- stepped ramp, 100
- stick system, 128
- stiff-mud process, 184
- stile, 111
- stilt, 33
- stilted arch, 49
- stilted vault, 44
- stirrup, 180
- stoop, 73
- stop bead, 113
- stoped gravity wall with buttresses, 58
- storm sewer, 236
- storm window, 115
- stovepipe, 205
- straight-run stair, 98
- strain-hardening range, 16
- straining beam, 81
- strap footing, 55
- strap hinge, 108
- stress, 16
- stress-strain diagram, 16
- stretcher, 182
- stretcher bond, 123
- stretcher course, 122
- strike plate, 106
- stringcourse, 120
- strip flooring, 136
- strongback, 178
- struck joint, 124
- structural analysis, 17
- structural failure, 21
- structural grid, 21
- structural insulating roof deck, 143
- structural lumber, 163

alphabetical index

- shadow block, 186
- shaft, 22
- shaft, 59
- shallow foundation, 56
- shear, 13
- shear diagram, 15
- shearing stress, 14
- sheath pile, 65
- sheathing, 32
- she-bolt, 178
- shingle, 82
- shingle tile, 83
- shiplap, 127
- shop lumber, 162
- shoring, 67
- short, 218
- short column, 22
- shoulder, 168
- shower, 231
- shrinkage, 161
- shut off valve, 230
- shutter blind, 215
- siamese connection, 243
- side, 182
- side edge, 182
- sidelap, 84
- sieve, 198
- sightline, 256
- sill, 111
- sill anchor, 34
- sill block, 187
- silver, 170
- simple beam, 26
- single core hollow brick, 117
- single tee, 43
- single-bevel butt weld, 174
- single-curvature structure, 51
- single-duct system, 211
- single-hung window, 112
- single-vee weld, 174
- sink, 231
- sinking, 178
- siphon-jet closet, 234
- siphon-vortex closet, 234
- site plan, 260
- sitework, 64
- size perspective, 255
- skip, 162
- skylight, 90
- skylight, 91
- skyscraper, 149
- slag cement, 175
- slat block, 134
- slate, 82
- sleeper, 33
- sliding door, 104
- sliding sash, 113
- slip form, 179
- slope of grain, 164
- slop-molding (USA), 184
- slotted head, 193
- slotted top screw, 195
- sludge, 238
- slump, 176
- slump block, 186
- slurry wall, 62
- slurry wall, 65
- smoke chamber, 204
- smoke hood, 204
- snap tie, 178
- snow load, 18
- sodium lamp, 223
- soft-burned, 184
- soft-mud brick, 184
- soil class, 64
- soil pipe, 236
- soil stack, 236
- solar collector, 214
- Solar energy, 201
- Solar energy, 213
- solar house, 213
- solar screen, 215
- solar-heating system, 214
- solarium, 213
- soldier, 182
- soldier course, 122
- solid, 250
- solid block flooring, 137
- solid column, 23
- solid flat slab, 43
- solid geometry, 250
- solid masonry, 46
- solid raft foundation, 56
- stone, 147
- sound, 69
- sound, 146
- sound insulation, 148
- sound intensity, 146
- sound intensity level, 146
- sound knot, 160
- sound level meter, 147
- sound-absorbing masonry unit, 186
- sound-power level, 146
- soundproof, 148
- space frame, 40
- space heating, 205
- spaced column, 23
- spacing criterion, 228

- rising hinge, 109
- rivet set, 200
- roll joint, 173
- roller joint, 20
- roof, 69
- roof, 73
- roof anchoring with jointed hooks in wood purl ins, 86
- roof anchoring with jointed L hooks on steel purl ins, 86
- roof anchoring with L hooks on steel purlins, 86
- roof anchoring with screws in wood purl ins, 86
- roof anchoring with U hooks on tubular steel purlins, 86
- roof framing, 36
- roof plan, 259
- roofing, 82
- roofing felt, 145
- roofing rail, 189
- roofing tile, 82
- room acoustics, 147
- room cavity, 228
- room cavity ratio, 228
- root, 168
- rotation, 11
- rotational equilibrium, 12
- rotational surface, 252
- rotunda, 150
- rough grading, 66
- rough stringer, 95
- roughing-in, 236
- round arch, 49
- round head, 193
- round point, 190
- row house, 151
- rowlock, 182
- rubber tile, 132
- rudolph type block, 188
- ruled surface, 252
- runner to post anchor, 34
- rustic terrazzo, 135
- rustic work, 120
- rustication, 120
- rustication strip, 178
- saddle, 78
- safety tread, 96
- safety valve, 206
- salient angle, 253
- sand, 175
- sand clay, 64
- sand filter, 239
- sand-cushion terrazzo, 135
- sanitary sewer, 236
- sanitary sewer, 236
- sanitary tee, 233
- sapwood, 159
- sash, 110
- sash, 111
- sawtooth roof, 79
- scaffold, 200
- scale, 260
- scalene triangle, 247
- scarf Joint, 169
- scarifier, 198
- Schwedler dome, 41
- scissors truss, 39
- sconce, 227
- scored block, 186
- screed, 198
- screen block, 187
- Screw, 157
- screw, 191
- screw pile point with a spiral flange, 59
- scum, 238
- scutch, 197
- seams in metal sheeting, 173
- seat angle, 35
- secondary beam, 25
- secondary cable, 50
- secondary member, 20
- secret dovetail, 169
- section, 259
- SECTION A, 58
- section line, 260
- security head, 192
- seepage pit, 239
- seismic force, 19
- semidetached dwelling, 151
- semidirect lighting, 225
- semi-indirect lighting, 225
- septic tank, 238
- septic tank, 239
- serial distribution, 239
- service, 230
- service conductor, 218
- service entrance conductor, 218
- service entrance conductor, 219
- service equipment, 218
- service equipment, 219
- service switch, 218
- set, to, 166
- setscrew, 191
- settlement, 19
- settlement load, 19
- sewage, 236
- sewage treatment plant, 238
- sewer, 236
- shades and shadows, 255

alphabetical index

- radial symmetry, 253
- radiant heat, 203
- radiation, 203
- radiator, 206
- raft connecting five piles, 61
- raft connecting four piles, 61
- raft connecting six piles, 61
- raft connecting three piles, 61
- raft connecting two piles, 61
- rafter, 32
- rafter to spandrel anchor, 34
- raised flooring system, 133
- raised foot raft foundation, 57
- raised rib raft foundation, 57
- rake, 78
- rake, 84
- rake tile, 83
- raked joint, 124
- raker, 65
- raking riser, 96
- rambler house, 152
- ramp, 94
- ramp, 100
- rampant vault 44
- random ashlar, 121
- random matching, 137
- random rubble, 121
- ratchet nail, 190
- raw water, 231
- reactive force, 11
- receptacle plug, 219
- recessed grid ceiling, 142
- recharge, 229
- recoverable light loss factor, 228
- rectangular coordinate system, 254
- reentrant angle, 253
- reflectance, 222
- reflected glare, 225
- reflected plan, 259
- reflected sound, 147
- reflecting surface, 147
- reflection, 222
- reflective insulation, 143
- reflector, 224
- refraction, 222
- refrigerant, 209
- regular bevel, 106
- regular block, 185
- regular structure, 21
- reheat coil, 210
- reinforced concrete beam, 27
- reinforced concrete floating foundation, 56
- reinforced concrete lattice, 115
- reinforced concrete pile, 24
- reinforced concrete slab, 42
- reinforcement, 180
- relief vent, 237
- repetitive member, 20
- reservoir, 229
- residential building, 150
- resilient channel, 118
- resilient flooring, 132
- resinous matrix, 135
- resistance, 216
- resisting moment, 14
- resonance, 147
- retaining wall, 67
- return air, 210
- return bend, 232
- return corner block, 188
- return pipe, 206
- return wall, 46
- reverberation, 147
- reverberation time, 147
- reverse bevel, 106
- reverse return, 208
- reverse-trap closet, 234
- revet, to, 67
- revetment wall, 67
- revolving door, 104
- rib lath, 131
- rib vault, 45
- ribbed foundation raft with a flange, 57
- ribbed foundation raft with a grade beam, 57
- ribbed slab, 42
- ribbon window, 114
- ridge beam, 81
- ridge covering, 85
- ridge tile, 83
- ridge board, 81
- ridgecap, 78
- right angle, 247
- right circular cone, 251
- right circular cylinder, 251
- right triangle, 248
- right-hand door, 105
- right-hand reverse door, 105
- rigid board insulation, 143
- rigid frame, 29
- rim lock, 107
- ring shake, 160
- ring-shank nail, 190
- ripsaw, to, 164
- rise, 48
- rise, 78
- riser, 93
- riser, 231
- riser/tread ratio, 97

- pitch, 78
 pitch pocket, 160
 pitched roof, 78
 pitched truss, 37
 pith, 159
 pivoted door, 104
 pivoted window, 112
 placement of steel reinforcement grids, 63
 plafond, 140
 plain-sawn, 164
 plain-sawn, 164
 plane geometry, 247
 plank, 163
 plank flooring, 136
 plaster of Paris, 131
 plaster partition made of solid prefabricated units, 117
 plastering, 131
 plastic deformation, 16
 plastic flow, 16
 plastic foam, 143
 plastic mix, 176
 plastic range, 16
 plastic soil, 64
 plat, 262
 plate tread, 96
 platform frame, 32
 Platonic solid, 250
 plenum, 142
 plenum barrier, 142
 plenum chamber, 212
 plug, 220
 plug, 233
 plug fuse, 218
 plumbing, 201
 plumbing, 229
 plumbing fixture, 231
 plywood, 165
 pneumatic water supply, 231
 point, 59
 point, 247
 point armored with a metal cone, 59
 point method, 228
 point of support, 14
 polar angle, 254
 polar axis, 254
 polar coordinate system, 254
 pole house, 152
 polyethylene, 145
 polygon, 248
 polygon method, 10
 polyhedron, 250
 polyurethane foam, 143
 porch, 73
 portal, 29
 portico, 73
 portland cement, 176
 portland cement mortar, 134
 positive moment, 15
 positive shear, 15
 post 33
 post to sleeper anchor, 35
 posts and timbers 163
 post-tensioned concrete, 181
 power, 218
 Pratt truss, 38
 preaction system, 243
 precast concrete pile, 59
 preferred angle, 97
 preheat coil, 210
 pre-post-tensioning, 181
 pressure, 18
 prestress, 181
 prestressed concrete, 181
 pretension, 181
 primary air, 210
 primary cable, 50
 primary member, 20
 principal beam, 25
 principal rafter, 81
 prism, 250
 projected window, 113
 projection, 256
 proportional limit, 16
 proscenium arch, 155
 protected membrane 'roof, 145
 protected opening, 241
 pull, 103
 pull bar, 103
 pump, 177
 pump, 207
 pumped concrete, 177
 purlin, 81
 push plate, 103
 pyramid, 250
 Pythagorean theorem, 248
 quadrilateral, 248
 quarterpace landing, 96
 quartersaw, to, 164
 quarter-turn stair, 98
 queen closer, 183
 queen post, 81
 queen truss, 37
 rabbet, 167
 rabbet joint, 167
 rabbeted, 125
 radial dome, 41
 radial shrinkage, 161

alphabetical index

- one-way slab, 42
- open mortise, 168
- open plan, 76
- open riser, 96
- open valley, 84
- open-web steel joist, 28
- optical plummet, 263
- orchestra, 154
- ordinary portland cement, 176
- organic soil, 64
- ornamental hollow brick, 183
- OSB, (oriented strandboard), 165
- outdoor stairs, 97
- outlet, 220
- outlet box, 219
- outrigger, 80
- oval head, 193
- overhanging beam, 26
- overhead door, 104
- padstone, 120
- pale, 65
- pan tread, 96
- pane, 111
- panel, 36
- panel board, 219
- panel length, 36
- panel load, 36
- panel point, 36
- panel system, 128
- paneled door (USA), 105
- pan head, 193
- pantile, 83
- paper-backed lath, 131
- parabola, 249
- parabolic reflector, 224
- parabolic surface, 252
- paraboloid, 252
- paraline drawing, 258
- parallel, 247
- parallel forces, 9
- parallel strand lumber, 165
- parallel-chord truss, 38
- parallelogram, 248
- parallelogram law, 10
- parapet, 88
- pargeting (USA), 144
- parquet, 136
- parquet circle, 155
- parquetry, 136
- parterre, 77
- partial prestressing, 181
- particle board (USA), 165
- particle-size distribution, 175
- parting bead, 112
- partition block, 116
- partition block, 187
- passenger elevator, 101
- passive solar-heating, 214
- patterned lumber, 162
- pavement saw, 199
- pavilion, 74
- Pavilion ceiling, 140
- pavilion roof, 79
- pea gravel, 64
- peanut gallery, 155
- pebble, 64
- pedestal pile, 60
- pediment, 78
- pediment, 119
- peep-hole, 103
- pendentive dome, 44
- pent roof, 79
- pentagon, 249
- perched water table, 229
- perforated brick, 183
- perforated shell tube, 53
- perforated tube, 58
- pergola, 77
- perimeter heating, 208
- perimeter radial system, 208
- peristyle, 75
- perivious soil, 229
- perlite, 175
- permanent set, 16
- perspective, 256
- phantom line, 14
- Phillips head, 192
- phloem, 159
- phosphor, 223
- phosphorescent, 223
- pictorial space, 255
- picture plane, 256
- pigtail, 220
- pilaster block, 187
- pile, 59
- pile cap, 61
- pile cap, 59
- pile density, 139
- pile point, 59
- pile shoe, 59
- pile weight, 139
- pillar, 22
- pilot hole, 191
- piloti, 76
- pin, 108
- pipe, 231
- pipe column, 24
- pipe fitting, 232

- main switchboard, 219
 maintenance factor, 228
 major axis, 249
 male connector, 233
 mandrel, 60
 mansard roof, 79
 mantel, 205
 mantelpiece, 205
 masonry flashing, 88
 masonry nail, 189
 mast, 50
 mastic, 132
 matched lumber, 162
 maximum demand, 218
 maximum overall length, 223
 Maxwell diagram, 36
 mean radiant temperature (MRT), 203
 measuring line, 257
 mechanical trowel, 198
 mechanics, 9
 medium steel, 171
 meeting rail, 112
 meeting stile, 103
 mercury-contact switch, 220
 Metal, 157
 metal, 170
 metes-and-bounds survey, 262
 method of joints, 36
 method of sections, 36
 mezzanine, 71
 mid-rise building, 149
 mild steel, 171
 mineral wool, 143
 minor axis, 249
 miscellaneous channel, 172
 mission tile, 83
 mistral type block, 188
 miter (USA), 167
 miter joint (USA), 167
 mitred halving (USA), 167
 mixed lighting, 225
 mixed-grain lumber, 164
 mixer faucet, 235
 mixing faucet, 235
 mixing water, 175
 molded polystyrene (USA), 143
 Molly®, 195
 moment, 12
 moment center (USA), 12
 moment diagram, 15
 monitor roof, 90
 monolithic terrazzo, 135
 mortise, 168
 mortise chisel, 200
 mortise hinge, 108
 mortise lock, 107
 mortise-and-tenon joint, 168
 mosque, 150
 mosquito screen, 115
 mullion, I 14
 multibay frame, 29
 multiple tube structure, 53
 multistory frame (USA), 29
 municipal supply valve, 230
 muntin, 103
 muntin, 111
 Nail, 157
 nail, 189
 narrow-ringed, 160
 natural cement, 175
 natural ventilation, 212
 needlepunched carpet, 139
 negative bending moment (USA), 15
 negative shear, 15
 net structure, 51
 neutral axis, 14
 newel, 99
 newel cap, 94
 newel drop, 94
 newel post, 93
 newel post, 94
 Newton's first Law, principle of inertia, 11
 Newton's second law of motion, 11
 nickel, 170
 noise, 148
 non bearing partition, 69
 nonbearing partition, 73
 non bearing partition, 116
 nonconcurrent forces, 9
 nonparallel system, 30
 nonrecoverable light loss factor, 228
 north arrow, 260
 nosing, 93
 nut, 196
 object line, 260
 oblate spheroid, 251
 oblique section, 259
 obtuse angle, 247
 obtuse triangle, 247
 occupancy load, 18
 occupancy separation, 241
 octagon, 249
 octahedron, 250
 Ohm, 216
 Ohm's law, 216
 olive knuckle hinge, 109
 one-pipe system, 207
 one-point perspective, 256

alphabetical index

- laced valley, 84
- Lambert, 221
- Lambert's law, 221
- laminated veneer lumber, 165
- lamp, 223
- lamp base, 223
- lamp bulb, 223
- lamp diameter, 223
- land survey, 262
- landing, 93
- landing tread, 95
- latch, 106
- latch bolt, 106
- lateral bracing, 31
- lateral reinforcement, 180
- lateral stability, 30
- lath, 131
- lattice, 115
- lattice, 215
- lattice dome, 41
- latticed truss tube, 53
- laundry tub, 231
- law of action and reaction, 11
- law of reflection, 222
- L-beam, 27
- lead, 170
- leader head, 89
- lean-to, 79
- ledger, 178
- ledger beam, 27
- left-hand door, 105
- left-hand reverse door, 105
- lens, 224
- lenticular structure, 51
- leveling (USA), 261
- Lewis bolt, 194
- lift-off hinge, 108
- light, 201
- light, 221
- light center length (USA), 223
- light framing wood, 163
- light, to, 224
- lighting, 219
- lignin, 159
- limit switch, 102
- line drop, 218
- line voltage, 217
- linear metal ceiling, 141
- linear perspective, 256
- linear structure, 21
- linked house, 151
- lintel, 110
- lintel block, 187
- live, 217
- live load, 18
- load, 12
- load combination, 17
- load flow, 18
- load-bearing partition, 46
- load-indicating washer, 196
- loam, 64
- local buckling, 17
- local lighting, 226
- local symmetry, 253
- lock, 106
- lock case, 106
- lock rail, 103
- lock seam, 173
- lock stile, 103
- locknut, 196
- loess, 64
- loft building, 149
- log, 162
- loggia, 76
- long column, 22
- long-and-short work, 120
- longitudinal reinforcement, 180
- longitudinal section, 259
- longitudinal shearing stress, 14
- longitudinal shrinkage, 161
- lookout, 80
- loop pile, 138
- loose-fill insulation, 143
- loose-pin hinge, 109
- loudness, 146
- lounge, 154
- louvered ceiling, 141
- louvered door, 105
- low heat portland cement, 176
- lower chord, 36
- low-rise building, 149
- L-shaped building, 149
- lumen, 221
- lumen method, 228
- luminaire, 227
- luminance, 221
- luminous ceiling, 141
- luminous flux, 221
- luminous intensity, 221
- lux, 221
- machine bolt, 194
- machine screw, 191
- made ground, 66
- magnesium, 170
- mail slot, 103
- main drain trap, 236
- main runner, 142
- main switchboard, 218

- insulating core sandwiched between two layers of plasterboard, 117
- hollow raft foundation, 57
- hollow-core slab, 43
- hood, 205
- Hooke's law, 16
- hopper light, 113
- hopper window, 112
- horizontal circle, 263
- horizontal diaphragm, 20
- horizontal exit door, 242
- horizontal furnace, 205
- horizontally sliding window, 113
- horseshoe arch, 49
- hot-water heating, 207
- house, 151
- housed joint, 169
- Howe truss, 38
- humidifier, 210
- hut, 153
- HVAC, 201
- HVAC, 203
- hydraulic cement, 175
- hydraulic elevator (USA), 101
- hypar, 252
- hyperbola, 249
- hyperboloid, 252
- hypotenuse, 248
- I-beam, 27
- icosahedron, 250
- idle sheave, 102
- igloo, 153
- illumination, 221
- impact factor, 17
- impact load, 17
- impact noise, 148
- impervious soil, 229
- impost, 48
- inactive leaf, 104
- in-and-out bond, 123
- incandescence, 223
- incandescent lamp, 223
- incidence, 222
- inclined lift, 101
- increaser, 233
- indeterminate structure, 21
- indirect lighting, 225
- indirect waste pipe, 236
- individual circuit, 219
- individual vent, 237
- induction unit, 211
- Inertia, 11
- inertia block, 148
- inflection, 15
- inflection point, 15
- initial prestress, 181
- inlay, 166
- inorganic silt, 64
- Installations, 201
- integrated ceiling, 142
- intergrown knot, 160
- interior angle, 248
- interlocking tile, 83
- intermediate column, 22
- internal dormer, 90
- intrados, 48
- inverse-square law, 221
- inverted roof, 87
- inverted T-beam, 27
- invisible hinge, 109
- iron, 170
- irregular structure, 21
- isolated footing, 55
- isometric projection, 258
- isosceles triangle, 247
- isostatic slab, 43
- jalousie window, 113
- jamb, 110
- jamb anchor, 110
- jamb block, 187
- [-bolt, 194
- jerkinhead, 79
- joint, 167
- joint sealant, 145
- joint tape, 118
- joist, 32
- joist to beam anchor, 34
- joists and planks, 163
- Joule's law, 216
- junction box, 219
- K-brace, 31
- key, 106
- key switch, 220
- keystone, 48
- keyway, 106
- kick plate, 95
- kiln, 184
- kilowatt, 218
- king closer, 183
- king post, 81
- king-post truss, 37
- knee, 36
- knee brace, 81
- knife switch, 220
- knife-blade fuse, 218
- knitted carpet, 138
- knock-out block, 185
- knuckle, 108

alphabetical index

- glass mullion system, 129
- glass wool, 143
- glazed brick, 184
- glazed wall tile, 134
- glazing tape, 145
- globe valve, 235
- gold, 170
- golden section, 253
- gooseneck lamp, 227
- government system, 262
- grade beam and pillar foundation, 56
- grade stake, 66
- grade strip, 178
- graded aggregate, 175
- graded ramp, 100
- grading plan, 260
- grain, 164
- graphic scale, 260
- gravel stop, 88
- gravity, 11
- gravity dam or gravity wall, 67
- gravity wall, 58
- gravity water system, 231
- grease interceptor, 238
- great circle, 251
- green brick, 184
- green room, 154
- gridiron, 155
- grinder, 200
- ground beam, 55
- ground floor, 71
- ground-fault interrupter, 220
- grounding outlet, 220
- grounding plug, 220
- groundwater, 229
- grout, 134
- Gunter's chain, 263
- gutter, 89
- gutter bed, 85
- gutter hook, 85
- gutter hook, 89
- guy cable, 50
- gypsum board, 118
- gypsum plaster, 131
- gypsum sheathing, 130
- H beam, 28
- half block, 185
- half comer block, 185
- half knock-out block, 185
- half-lap joint, 167
- half-mortise hinge, 108
- halfpace landing, 96
- half-surface hinge, 108
- half-turn stair, 98
- hall, 74
- hallway, 74
- hammer beam, 39
- hammer-beam roof, 39
- handrail, 93
- hanging gutter, 89
- hanging stile, 103
- hard steel, 171
- hard water, 231
- hardboard, 165
- hard-burnt, 184
- harped tendon, 181
- hatchet, 197
- haunched tenon, 168
- head edge, 182
- head, end, 182
- header, 25
- header, 182
- header block, 186
- header bond, 123
- header course, 122
- heartwood, 159
- heat, 203
- heat exchanger, 209
- heat of condensation, 203
- heating medium, 207
- helicline, 100
- herringbone matching, 137
- hexagon, 248
- hexagram, 249
- hex-head, 192
- H-hinge, 109
- high early strength portland cement, 176
- high-rise building, 149
- high-strength low-alloy steel, 171
- high-voltage, 217
- hinge, 108
- hinge joint, 20
- hinge stile, 110
- hinged door, 104
- hinged frame, 29
- hip, 78
- hip jack, 80
- hip rafter, 80
- hip roll, 85
- hip tile, 83
- hipped roof, 79
- hogan, 153
- hoisting cable, 102
- hoisting machinery, 102
- hoistway door, 102
- holddown, 34
- hollow brick, 183
- Hollow core prefabricated separating wall; an

- flat roof over an air space, 87
- flat roof without an air space, 87
- flat slab, 42
- flathead, 193
- Flemish bond, 122
- Flemish diagonal bond, 122
- flexible footing, 54
- flier, 96
- flies, 155
- flight of stairs, 93
- flitch, 162
- flitchplate, 28
- float switch, 220
- floater (USA), 198
- flocked carpet, 138
- flood level, 240
- floodlight, 227
- floor, 71
- floor, 73
- floor cavity, 228
- floor plan, 259
- floorboard, 163
- flooring, 132
- flooring nail, 189
- flow pressure, 240
- flue, 204
- flue lining, 204
- fluid-applied roofing, 145
- fluorescence, 223
- fluorescent lamp, 223
- flush girt, 32
- flush joint, 124
- flush plate, 220
- fly rafter, 80
- flying form, 179
- foam glass, 143
- foamed-in-place insulation, 143
- folded slab, 43
- folding casement, 112
- folding door, 104
- folly, 77
- footing, 54
- force, 9
- force arm, 12
- forced warm-air heating, 207
- forecourt, 75
- foreshortening, 255
- form, 179
- form decking, 179
- form liner, 178
- form-active structure, 47
- formwork, 178
- foundation, 54
- foundation, 73
- foundation digging equipment, 63
- four-pipe system, 211
- four-way switch, 220
- fox bolt, 195
- foxtail wedge, 169
- fracture, 16
- Frame structure, 29
- frame system, 29
- framed tube structure, 53
- frames to which the siding is attached, 126
- framing anchor, 34
- framing plan, 259
- Franklin stove, 205
- free-body diagram, 14
- freight elevator (USA), 101
- French door, 105
- frequency, 146
- fresh air, 210
- Fresnel lens, 224
- front of the house, 154
- frontispiece, 119
- funicular arch, 47
- funicular curve, 47
- funicular polygon, 47
- funicular shape, 47
- funicular structure, 47
- furnace, 206
- fuse, 218
- fusion-bonded carpet, 138
- gable dormer, 90
- gable roof, 79
- gable wall, 119
- gable window, 114
- galvanic series, 170
- garden stairs, 97
- gargoyle, 89
- gas furnace, 206
- gate valve, 235
- gazebo, 77
- general diffuse lighting, 225
- general lighting, 226
- general purpose circuit, 219
- generator, 209
- generator, 217
- geodesic dome, 41
- geometrical stair, 99
- Geometry, 245
- ger type block, 188
- girder, 32
- girt, 33
- glare, 225
- glass block, 118
- glass block partition, 118
- glass fanade, 129

alphabetical index

evaporator, 209
evaporator, 209
evaporator, 210
excavation, 65
exhaust air, 210
exhaust fan, 212
existing grade, 66
exit, 242
exit corridor, 242
exit discharge, 242
exit door, 242
exit light, 242
expanded clay, 175
expanded slate, 175
expansion bolt, 195
expansion screed, 118
expansion valve, 209
exploded view, 258
exposed grid ceiling, 142
extended plenum system, 208
exterior angle, 248
exterior exit, 74
extrados, 48
extruded polystyrene, 143
eyebolt, 194
eyebrow, 90
fanade, 69
fallade, 73
fanade, 119
face, 182
face edge, 182
face string, 95
faced block, 186
faced wall, 46
face-nail, 166
faceplate, 106
fall, 236
false ceiling, 141
false front, 119
fan, 207
fan, 212
fan truss, 39
fan vault, 45
fan-coil unit, 211
faucet, 235
fault, 218
feeder, 219
female, 233
fiber (USA), 160
fiberboard (USA), 165
fiberboard sheathing (USA), 130
fiberglass (USA), 143
fiberglass shingle (USA), 82
field tile, 83
figure, 253
fill, to, 66
filler plate, 35
fillister head, 192
filter, 210
fin tube, 206
fine aggregate, 64
fine grading, 66
fine textured, 160
finger joint, 169
finish coat, 131
finish floor, 69
finish floor, 132
finished floor, 73
Fink truss, 38
fire area, 241
fire assembly, 241
fire clay, 184
fire curtain, 155
fire door, 242
fire escape, 242
fire extinguisher, 243
fire hose, 243
fire hydrant, 243
fire pump, 243
fire safety, 241
fire safety, 201
fire screen, 205
fire separation, 241
fire wall, 241
fire-alarm system, 243
firebrick, 184
firebrick, 204
firecut, 28
fire-detection system, 243
fireplace, 204
fire-resistance rating, 241
firing, 184
first floor, 71
fixed frame, 29
fixed joint, 20
fixed light, 112
fixed-end beam, 26
fixed-end connection, 20
fixture drain, 236
flag, 134
flange, 28
flange angle, 28
flanking path, 148
flashing, 88
flat gravity wall, 58
flat gravity wall with buttresses, 58
flat plate, 43
flat roof, 87

- drill bit, 199
 drip edge, 84
 drip molding, 111
 drive screw, 189
 drive shoe, 59
 driving sheave, 102
 drop chute, 177
 drop elbow, 232
 drop siding, 125
 drop stage, 155
 drop tee, 232
 drop window, 113
 droplight, 227
 dropped girt, 32
 drum trap, 240
 drumwall, 213
 dry mix, 176
 dry return, 206
 dry-pipe system, 243
 dry-press process, 184
 dual system, 30
 dual vent, 237
 dual-duct system, 211
 ductwork, 207
 duplex apartment, 150
 duplex house, 151
 Dutch door, 105
 Dutch lap, 84
 dynamic load, 17
 earth pressure, 18
 earth tieback wall, 67
 earthquake, 19
 earthquake load, 19
 earthwork, 66
 eave, 78
 eaves course, 83
 eccentric bracing, 31
 eccentric force, 12
 eccentric load, 12
 eccentric load, 12
 eccentric tendon, 181
 edge, 167
 edge, 250
 edge cover, 85
 edge joint, 167
 edge - grained, 164
 edger, 198
 edifice, 149
 effective length, 17
 effective length factor, 17
 effective prestress, 181
 effective temperature, 203
 effluent, 238
 eggcrate, 224
 elastic deformation, 16
 elastic limit, 16
 elastic range, 16
 elasticity, 16
 elastomeric roofing, 88
 elbow, 232
 electric arc, 174
 electric charge, 216
 electric elevator (USA), 101
 electric furnace, 206
 electric heat, 216
 electric motor, 217
 electrical resistivity, 216
 Electrical supply, 217
 Electricity, 201
 electricity, 216
 electromotive force, 216
 elevation, 259
 elevator (USA), 69
 elevator (USA), 101
 elevator car (USA), 101
 elevator car safety (USA), 102
 elevator pit (USA), 102
 elevator shaft (USA), 102
 ellipse, 249
 elliptical paraboloid, 252
 elliptical arch, 49
 elliptical reflector, 224
 elliptical stair, 99
 elliptical surface, 252
 emergency lighting, 242
 end grain, 164
 end joint, 167
 end-nail, 166
 energy-saver lamp bulb, 223
 engaged column, 23
 engineer's chain, 263
 English bond, 123
 English cross bond, 123
 EPDM, 145
 equal leg angle, 172
 equiangular, 248
 equilateral, 248
 equilateral arch, 49
 equilibrant, 10
 equilibrium, 11
 equinox, 213
 equipoise, 11
 erection bracing, 31
 escalator, 100
 escutcheon, 106
 Euclidean geometry, 245
 Euclidean geometry, 247
 Euclidean space, 254

alphabetical index

- dead load, 18
- dead bolt, 106
- decibel, 146
- deck, 75
- decking, 163
- deep foundation, 63
- deep-seal trap, 240
- deflected tendon, 181
- deflection, 13
- deformation, 16
- deluge system, 243
- dismountable partition, 116
- depressed tendon, 181
- descriptive geometry, 254
- detached dwelling, 151
- DETAIL B, 58
- determinate structure, 21
- diagonal, 248
- diagonal bracing, 31
- diagonal grain, 164
- diagonal member, 36
- diagonal vanishing point 257
- diameter, 249
- diamond faced block, 188
- diamond matching, 137
- diamond point, 190
- diaphragm, 30
- dielectric strength, 217
- differential settlement, 19
- diffraction, 222
- diffuse light, 222
- diffuser, 206
- diffuser, 224
- diffusion, 222
- dimension line, 260
- dimension lumber, 163
- dimetric projection, 258
- dimmer, 224
- dintel to post anchor, 34
- direct cu current, 216
- direct dumping, 177
- direct glare, 225
- direct lighting, 225
- direct return, 208
- direct sound, 147
- direction, 9
- discharge lamp, 223
- discontinuous construction, 148
- discontinuous diaphragm, 30
- disposer, 240
- distributed load, 17
- distribution box, 238
- distribution cap, 50
- distribution panel, 219
- distribution rib, 42
- dodecahedron, 250
- dog, 98
- dogleg stair, 98
- dome, 41
- door, 69
- door, 73
- door, 103
- door bell, 220
- door chain, 103
- door closer, 103
- door lining, 119
- doorhandle, 106
- doorstop, 103
- dormer, 90
- dormer window, 90
- dosing chamber, 238
- dotted line, 260
- double core hollow brick, 117
- double diamond tipe block, 188
- double door, 104
- double glazing, 143
- double hung, 113
- double overhanging beam, 26
- double tee, 43
- double-bevel weld, 174
- double-cable structure, 51
- double-comer block, 187
- double-curvature structure, 51
- double-headed nail, 189
- double-hung window, 112
- double-L stair, 98
- double-return stair, 98
- double-vee weld, 174
- dovetail, 169
- dovetail hinge, 108
- dovetail joint, 169
- dowel-bar reinforcement, 179
- downdraft, 205
- downlight, 227
- downspout, 89
- draft, 205
- drainage channel, 58
- drainage screen, 58
- drainage system, 236
- Drawing, 245
- drawing, 255
- dressed lumber, 162
- dressed size, 163
- dressed stone, 120
- dressng room, 154
- drift, 13
- driftpin, 200
- drill, 199

- construction joint, 179
 construction load, 18
 continuity of outline, 255
 continuous beam, 26
 continuous footing, 55
 continuous hinge, 109
 continuous slab, 43
 continuous slurry wall with buttresses, 62
 continuous vent, 237
 contour, 253
 contour line, 262
 contour map, 262
 control panel, 102
 controlled fill, 66
 convection, 203
 convector, 206
 convenience outlet, 219
 cooling tower, 210
 cooper clout nail, 190
 cooperative apartment building, 150
 coordinate, 254
 coping block, 187
 coplanar forces, 9
 copper, 170
 corbel piece, 81
 corbeling (USA), 25
 core, 165
 core, 217
 cork tile, 134
 comer block, 185
 comer block, 188
 comer brace; angle brace; knee brace, 31
 comer post, 32
 comer reinforcement, 131
 cornerstone, 120
 cornice lighting, 226
 corona, 119
 corporation cock, 230
 corridor, 74
 corrugated metal, 82
 corrugated roofing, 85
 coulomb, 216
 counterflashing, 88
 countersink, to, 191
 counterweight, 102
 couple, 37
 couple of forces, 12
 coupling, 233
 course, 122
 coursed ashlar, 121
 court, 75
 courtyard, 75
 cove, 140
 cove ceiling, 140
 cove lighting, 226
 cover plate, 28
 cowl, 205
 crawl space, 71
 crescent truss, 39
 cribbing, 67
 cricket, 90
 cripple jack, 80
 critical angle, 97
 critical buckling load, 17
 crook, 161
 cross, 232
 cross bracing, 31
 cross grain, 164
 cross section, 259
 cross tee, 142
 cross vault, 45
 cross ventilation, 212
 crosscut, to, 164
 cross-lap joint, 167
 crown saw, 199
 crushed gravel, 64
 crushed rock, 64
 cube, 250
 cul-de-four, 44
 cup, 161
 curb box, 230
 curb cock, 230
 curb roof, 79
 current, 216
 curtail, 94
 curtail step, 94
 curtain wall, 128
 cushion, 59
 cut and fill, 66
 cut nail, 189
 cut pile, 138
 cut string, 95
 cut-and-mitered string (USA), 95
 Cyclopean, 121
 cylinder, 106
 cylinder, 251
 cylinder lock, 107
 cylindrical gravity wall with buttresses, 58
 cylindrical surface, 252
 damp course, 144
 damp proofing, 58
 damp proofing, 144
 damper, 204
 darby, 198
 dashed line, 260
 datum, 261
 dead, 217
 dead knot, 160

alphabetical index

- circuit breaker, 218
- circular saw, 199
- circular stair, 99
- circumference, 249
- cistern, 229
- clapboard, 125
- clapboard, 125
- class A element, 241
- class B element, 241
- class C element, 241
- class D element, 241
- class E element, 241
- claw chisel, 197
- claw hammer, 197
- clay, 64
- clay, 184
- clay loam, 64
- clay sealer, 58
- clear span, 17
- clerestory (USA), 90
- climbing form, 179
- clinker brick, 184
- cloister vault, 45
- close couple roof, 80
- closed loop system, 208
- closed plan, 76
- closed stairway, 93
- closed string, 95
- closet bend, 234
- cluster housing, 152
- coal tar, 145
- coarse aggregate, 175
- coarse texture, 160
- coarse-grained, 160
- coaxial forces, 9
- cocking piece, 84
- cocofibre slab, 134
- coefficient of utilization (USA), 228
- coffering, 140
- cohesionless soil, 64
- cohesive soil, 64
- coil, 210
- coil, 217
- cold process roofing, 145
- cold-air return, 206
- cold-drawn steel, 171
- collimate, to, 224
- colonial siding, 125
- colonnade, 74
- column, 22
- column-cover-and-spandrel system, 128
- combined footing, 55
- combined sewer, 236
- combplate, 100
- combustible, 207
- combustion air, 206
- common brick, 183
- common dovetail, 169
- common lap, 84
- common nail, 189
- compass plane, 200
- components of a force, 10
- composite beam, 24
- composite panel, 165
- composite pillar, 24
- composite truss, 37
- composite wall, 46
- compound column, 24
- compound girder, 27
- compression, 13
- compression gasket, 145
- compression member, 13
- compressive refrigeration, 209
- compressive stress, 15
- compressor, 209
- compressor, 210
- concave joint, 124
- concealed grid ceiling, 142
- concentrated load, 17
- concentric tendon, 181
- Concrete, 157
- concrete, 175
- concrete block, 185
- concrete breaker, 197
- concrete foot cast in situ, 59
- concrete placing equipment, 63
- concrete pump, 177
- concrete slab, 42
- concurrent forces, 9
- condensation, 144
- condensation pump, 206
- condenser, 209
- condenser, 209
- condominium, 150
- conduction, 203
- conductivity, 216
- cone, 251
- cone of vision, 256
- cone-nut tie, 178
- conic section, 251
- conical shoe, 59
- conical vault, 44
- connector, 219
- conoid, 252
- consistency, 176
- consolidation, 177
- constant-air-volume system, 211
- construction, 157

- bulkhead, 102
- bulkhead, 178
- bull float, 198
- bull header, 183
- bulldozer, 65
- bullnose block, 187
- bungalow, 151
- bus, 218
- butt hinge, 109
- butt-end anchor and anchor bolts, 34
- butterfly, 169
- butterfly roof, 79
- butt-joint glazing, 129
- cabinet drawing, 258
- cable structure, 50
- cable support, 20
- cable-restrained pneumatic structure, 52
- cable-stayed structure, 50
- cadastral survey, 262
- cadmium, 170
- caliduct, 207
- cam, 106
- camber, 22
- cambium, 159
- candela, 221
- candle, 221
- candlepower, 221
- cant strip, 88
- cant window, 114
- cantilever, 20
- cantilever beam, 26
- cantilever footing, 55
- cantilever wall, 67
- cantilevered slurry wall, 62
- cantilevered step, 96
- cap, 196
- cap block, 186
- cap nut, 196
- cap plate, 35
- cap screw, 191
- cap sheet, 88
- capital, 22
- canbon, 171
- canbon steel, 171
- carpet, 138
- carpet pile, 139
- carpet tile, 139
- carpet underlay, 138
- carriage bolt, 194
- Cartesian coordinate, 254
- cartridge fuse, 218
- case, 130
- cased pile, 60
- casement window, 112
- casing, 60
- casing bead, 118
- casing nail, 190
- cast iron shoe, 59
- cast iron shoe with a conical steel point, 59
- cast steel, 171
- castellated beam, 28
- castellated nut, 196
- cast-in-place concrete, 177
- cathode, 216
- cavalier drawing, 258
- cavity wall, 46
- ceiling, 69
- ceiling, 73
- ceiling, 140
- ceiling joist, 140
- cellar, 71
- cellular foundation, 56
- cellulose, 159
- cement, 175
- cement mixer, 177
- cement-lime mortar, 144
- center (USA), 249
- center line (USA), 260
- center of gravity (USA), 11
- center of vision (USA), 256
- centerline (USA), 253
- central air conditioning, 210
- central axis of vision, 256
- central heating, 206
- centrifugal fan, 212
- ceramic, 184
- ceramic mosaic tile, 130
- ceramic tile, 134
- cesspool, 239
- chain, 263
- chain saw, 199
- chalet, 152
- chamfer, 168
- chandelier, 227
- chase mortise, 168
- check, 160
- chimney, 204
- chimney breast, 205
- chimney effect, 204
- chimney hood, 92
- chisel, 197
- chisel point, 197
- chisel, to, 166
- chord, 36
- chuff, 184
- church, 150
- circle, 249
- circuit, 216

alphabetical index

- bearing, 14
- bearing wall, 46
- bearing wall system, 30
- belfast truss, 38
- Belgian truss, 38
- bell-and-spigot joint, 233
- bench mark, 261
- bench terrace, 66
- bending, 13
- bending member, 13
- bending moment, 14
- bending stress, 14
- bentonite, 64
- berliner, 135
- bidet, 231
- bilateral symmetry, 253
- hi-level, 152
- bin wall, 67
- binding beam, 32
- bitumen, 145
- blank window, 112
- blind mortise, 168
- blind-nail, 166
- block, 149
- 810ck, 157
- block flooring, 136
- block paving, 137
- blow, 65
- blow torch, 200
- blower, 207
- board, 163
- board and batten, 127
- board foot, 163
- board measure, 163
- boiler house, 206
- Bolt, 157
- bolt, 194
- bolt head, 192
- bond, 123
- bond coat, 134
- bond course, 46
- bond course, 122
- bonding agent, 135
- book matching, 137
- bottom bar, 180
- bottom rail, 103
- boundary cable, 50
- bow, 161
- bow saw, 199
- bow window, 114
- bowstring truss, 38
- box beam, 24
- box beam, 27
- box beam, 28
- box column, 23
- box culvert, 236
- box foundation, 57
- box gutter, 89
- box nail, 189
- box strike, 106
- brace, 31
- braced frame structure, 31
- braced tube, 53
- bracing, 31
- bracket, 96
- brad, 190
- branch, 230
- branch circuit, 219
- brass, 170
- break line, 260
- breakdown voltage, 217
- breast drill, 199
- breast timber, 81
- breezeway, 74
- Brick, 157
- brick, 182
- brick facing, 130
- brick kiln, 184
- brick on edge (horizontal), 182
- brick on edge (vertical), 182
- brick pavement, 132
- brick veneer, 130
- bricklayer's hammer, 197
- bricklayer's trowel, 198
- brickmaking mold (USA), 184
- bridge, 155
- bridge board, 95
- bridge lamp, 227
- bridle joint, 168
- brittleness, 16
- broken stone, 64
- bronze, 170
- buckling, 13
- buckling load, 13
- buffer, 102
- buggy, 177
- bugle head, 193
- building, 69
- building, 71
- building, 149
- building drain, 236
- building sewer, 236
- building typology, 69
- building typology, 149
- built-up column, 23
- built-up roofing, 88
- bulb, 60
- bulk-active structure, 22

- arbor (USA), 77
 arc, 249
 arc welding, 174
 arch, 48
 arch brick, 183
 arch stone, 48
 architectural drawing, 259
 architectural terra cotta, 130
 area of refuge, 242
 area plan, 260
 area source, 141
 areaway, 71
 anis gutter, 89
 artesian well, 229
 artificial horizon, 263
 artificial light, 225
 asbestos shingle, 82
 ashlar masonry, 121
 ashlaring, 130
 ashpit, 204
 asphalt, 145
 asphalt shingle, 82
 asphalt tile, 134
 atrium, 75
 attached column, 23
 attic, 71
 attic, 71
 attic ventilator, 212
 audio frequency, 146
 auditorium, 155
 auger, 199
 auger bit 199
 automatic fire-extinguishing system, 243
 awl, 200
 awning, 115
 awning, 215
 awning window, 113
 ax, 197
 axial force, 12
 axial load, 12
 axial stress, 15
 axis of symmetry, 253
 axonometric projection, 258
 back hearth, 204
 back nut, 196
 back vent, 240
 backacting shovel, 65
 backfill, 66
 backflap hinge, 108
 backflow valve, 235
 background noise, 148
 backing, 116
 backing, 130
 backing, 138
 backslash, 240
 backstage, 154
 backup wall, 128
 balanced step, 96
 balcony, 71
 balk, 162
 ball cock, 234
 ball hammer, 197
 ballast, 223
 ball-bearing hinge, 109
 balloon frame, 33
 baluster, 94
 balustrade, 94
 band saw, 199
 bar type block, 188
 barefaced tenon, 168
 barge couple, 80
 bark, 159
 barrel bolt, 107
 barrel roof, 79
 barrel vault, 44
 base, 22
 base, 149
 base, 248
 base anchor, 34
 base flashing, 88
 base line, 261
 base metal, 174
 base molding (USA), 133
 base sheet, 88
 base shoe, 133
 baseboard, 133
 baseboard heater, 206
 basement, 71
 basket arch, 49
 bathtub, 231
 batt insulation, 143
 batten, 127
 batten door, 105
 batten seam, 173
 batter, 67
 batter board, 65
 bay window, 114
 bead, 173
 bead, 174
 beam, 33
 beam ceiling, 140
 beam fill, 28
 beam pocket, 28
 beam to girder anchor, 34
 beam to girder anchor, 35
 beam to header anchor, 34
 beam-and-girder slab, 43
 beams and stringers, 163

- abbey, 150
A-block, 186
Abrams' slump cone, 176
Abrams' slump test, 176
absorber, 209
absorbing surface, 214
absorption bed, 238
absorption coefficient, 222
absorption field, 238
absorption refrigeration, 209
absorption trench, 238
Abyssinian well, 229
access ramp, 100
Accessory elements of windows, 115
acetylene blowlamp, 200
acoustic decking, 142
acoustic insulation, 147
acoustic mass, 148
acoustical analysis, 147
acoustical ceiling, 142
acoustical design, 147
acoustics, 146
acoustics, 147
act curtain, 155
actions, 13
active earth pressure, 18
active leaf, 104
active solar-heating system, 214
acute angle, 247
acute triangle, 247
adhered veneer, 130
aerial perspective, 257
aggregate, 175
agitator truck, 177
air brush, 200
air chamber, 237
air change, 212
air conditioning, 209
air drill, 199
air gap, 240
air hammer, 197
air heater, 207
air Inlet 237
air switch, 220
airborne sound transmission, 148
air-entraining portland cement 176
air-handling unit 210
air-inflated structure, 52
air-supported structure, 52
air-water system, 211
airway, 87
aisle, 154
alidade, 263
aligning punch, 200
ail-air system, 211
Allen head, 192
alloy, 171
alloy steel, 171
all-water system, 210
all-water system, 211
alternator, 217
altitude, 146
aluminium (GB), 170
aluminum foil, 144
ambient temperature, 203
American bond, 123
American standard channel, 172
ammeter, 216
amperage, 216
ampere, 216
amplitude, 146
analysis of structure, 17
anchoring systems for wooden wall siding, 126
angle, 247
angle cleat, 35
angle corbel, 85
angle Joint, 167
angle of Incidence, 222
angle of reflection, 222
angle of refraction, 222
angle of repose, 67
angle of slide, 67
angle post 94
angle tile, 83
angle valve, 235
annual ring, 159
annular vault, 45
anode, 216
anti-scald faucet 235
apartment building, 150
apex stone, 119
apothem, 248
apparently horizontal roof surface, 87
appearance lumber, 162
appliance, 220
applied force, 12
apron, 110
apron, 154
apron piece, 95
aquifer, 229

